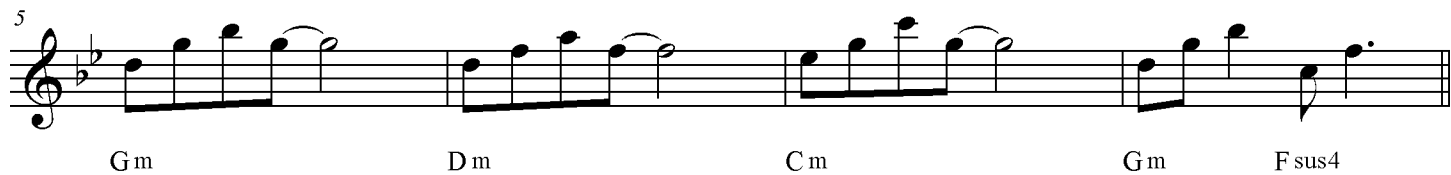


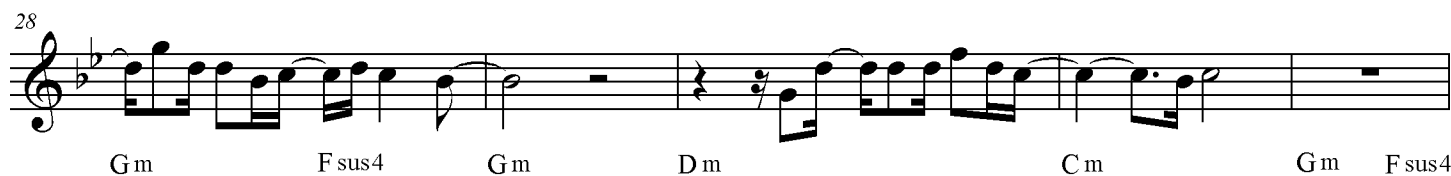
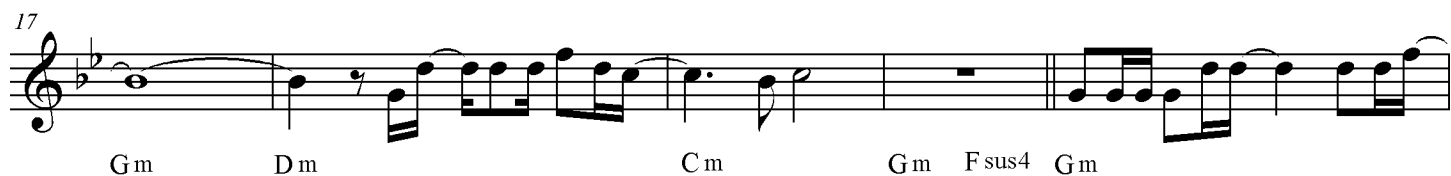
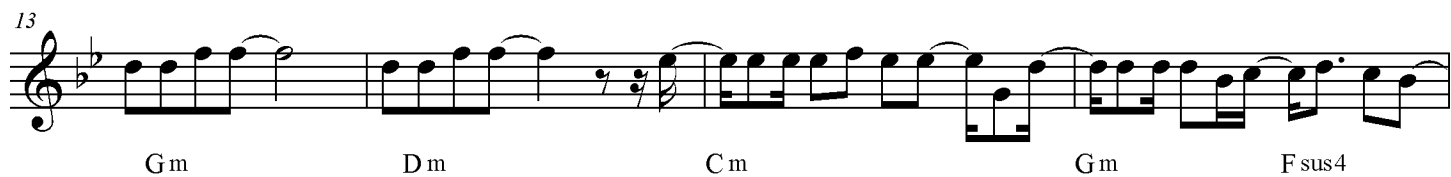
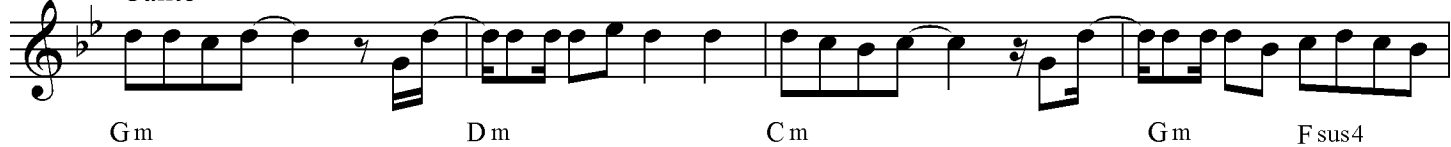
# SUSPIRO

STRUMENTI IN DO

Intro



Canto



33

G m D m C m G m F sus4

37

37

B $\flat$  F G m

Detailed description: This image shows measures 37, 38, and 39 of the musical score for 'The Rose Tree'. Measure 37 starts with a treble clef and a key signature of one flat (B-flat). The melody consists of eighth and sixteenth notes. Measure 38 continues the melody. Measure 39 features a whole note chord, indicated by a vertical line with a slash through it, and a fermata over the final note. The chords B-flat, F, and G minor are indicated below the staff.

40

E $\flat$  F G m

This system contains the first 12 measures of the piece. It begins with a treble clef, a key signature of one flat (B-flat), and a common time signature. The melody is written on a single staff. The first measure is a half note E-flat. The second measure is a half note F. The third measure is a half note G. The fourth measure is a half note A. The fifth measure is a half note B-flat. The sixth measure is a half note C. The seventh measure is a half note D. The eighth measure is a half note E. The ninth measure is a half note F. The tenth measure is a half note G. The eleventh measure is a half note A. The twelfth measure is a half note B-flat. The system ends with a double bar line.

43 

47

C m G m C m G m9 C m

52

G m G m D m C m

56

G m G sus4 G m D m

59

C m G m

# Suspiro

3

61

C m G m C m G m

65

C m G m9 C m G m

69

C m G m C m G m

73

C m G m C m G m

77

C m G m C m G m

81

C m G m C m G m