

LA CRISI

Musica di:
R. TOMASSINI - P. ANTONELLI

STRUMENTI in DO

Tarantella A

Lab Mib Sib

Sib7 Mib Lab Mib Sib

B

Mibm Mibm

Sib7 Mibm

1.

2.

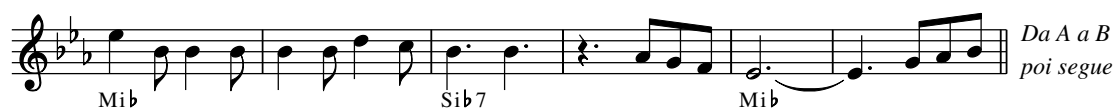
Mibm Labm Mibm Sib7

Mibm Labm Mibm Fa7

Sib Fa7 Sib Mib Sib7

Mib Lab Mib

Sib7 Mib Lab



LA CRISI

Musica di:
R. TOMASSINI - P. ANTONELLI

FISARMONICA

Tarantella

4 3 16 3 2

Musical score for "L'Allegretto" by Franz Schubert, Op. 133, in 3/4 time. The score is written for a single melodic line on a grand staff (treble and bass clefs). It begins with a key signature of one sharp (F#) and a 3/4 time signature. The music features a variety of rhythmic patterns, including eighth and sixteenth notes, and rests. A repeat sign with a double bar line and a first ending bracket is present. The score concludes with a double bar line and a repeat sign.