

ANDES

Moderato

Musica di
ROSSI - MAZZUCATO
ANTONELLI

STRUMENTI in DO - FISARMONICA

Moderato

Batt. $\frac{2}{4}$ *Pan flute* *Fisa*

Mim Sol Re Sim Re Mim

Mim Sol Re Sim Re Mim

Mim Sol Re Sim Re Mim

Mim Sol Sim Re Mim

Sim Re Mim Sol Re

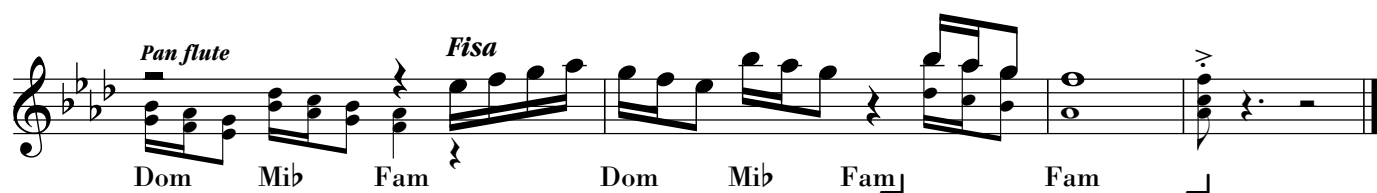
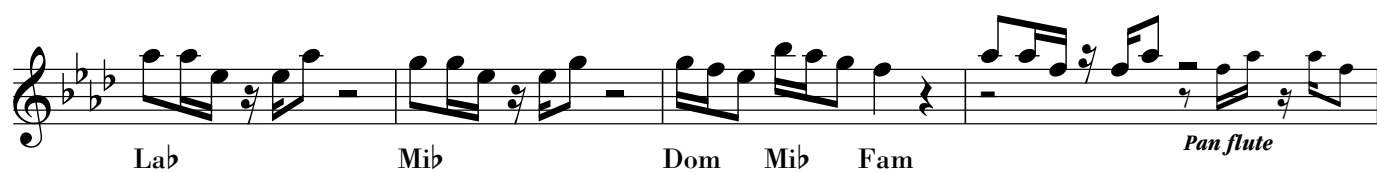
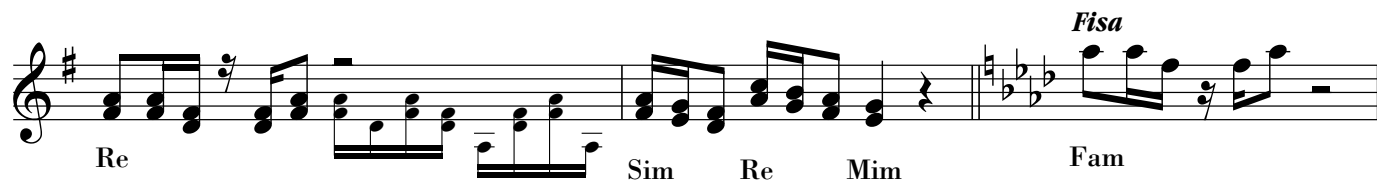
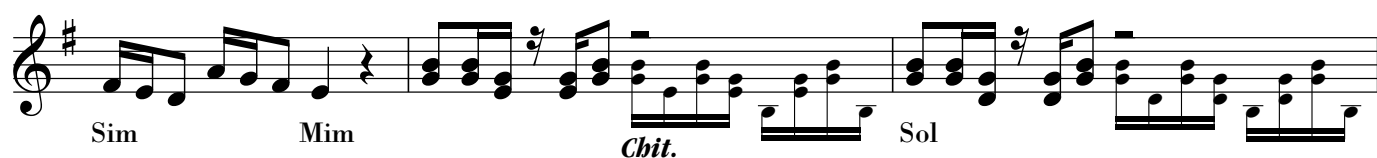
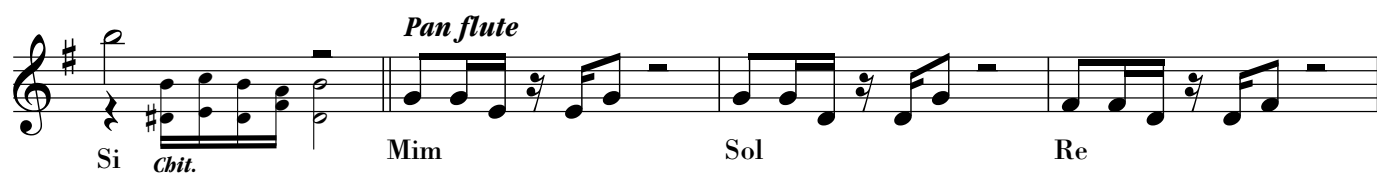
Mim Re Sol

Re Mim Si

Segue *Pan flute* *Chit.* *Fisa*

Sol Re Sol

Re Sol



ANDES

Moderato

Musica di
ROSSI - MAZZUCATO
ANTONELLI

2ª FISARMONICA

Moderato

Batt.

1

2

Dal 2 al 4
(senza il Rit.)
poi Segue

Segue

3

8