

# GINGER FOX

Fox-trot

Musica di  
**ANTONELLI - MORETTI**

Fox-trot 

STRUMENTI in DO

*Pianof.*



Fam Dom

Lab7 Sol7 Dom Sol7(9b) Dom

Re7 Sol7

Dom Fadim Dom Re7

Sol7 Dom Fam Sol7

Dom Sol7

Dom Sol7

Dom Sol7

Dom Mib Ladim Lab7

Sol7 Dom

Sol7 Dom

*Segue*

*Brass*

Sol7 Dom

*Fisa*

Sol7 Dom Mib

Ladim Lab7 Sol7

Dom Sol7

*Fisa*

Dom Dom

Re7 Sol7 Dom

Fadim Dom Re7

Sol7 Dom Mib Dom Lab7

Dom Mib Dom Lab Sol7

*Pianof.*

Dom Sol7 Dom Dom

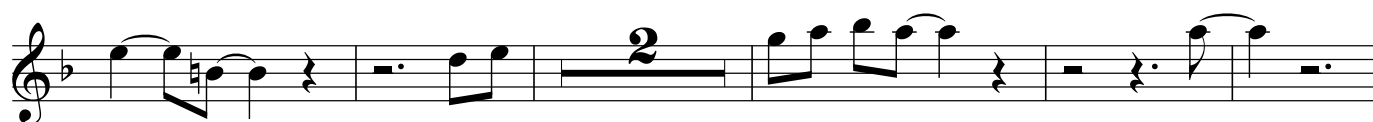
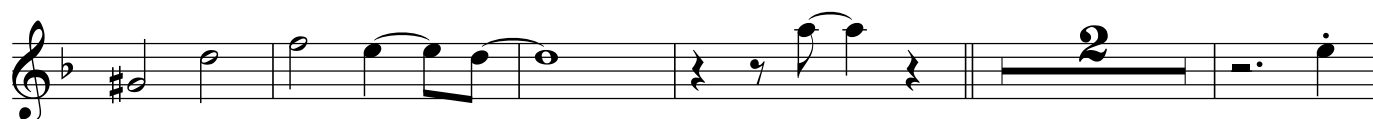
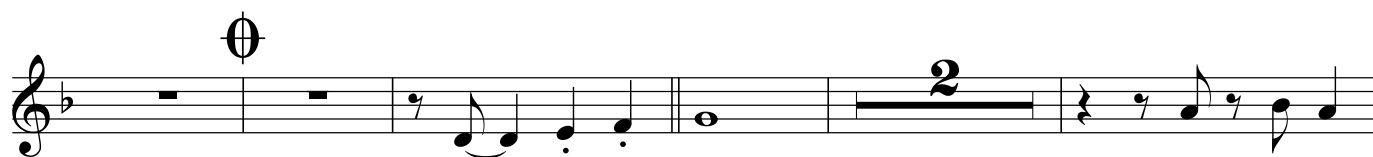
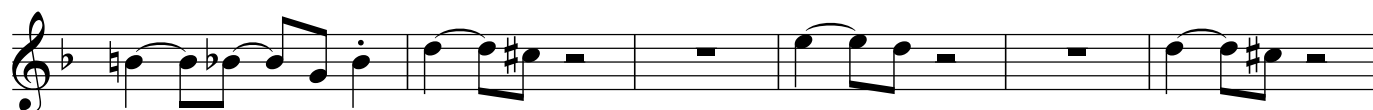
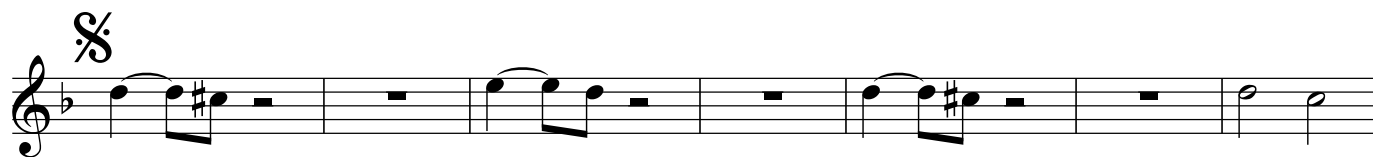
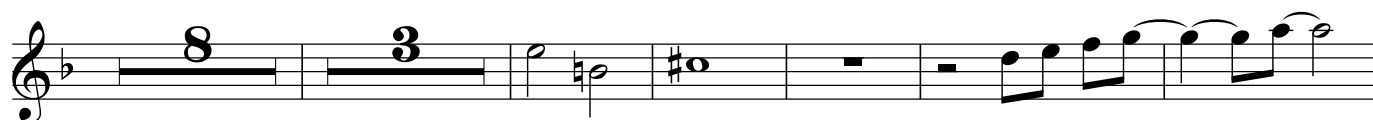
# GINGER FOX

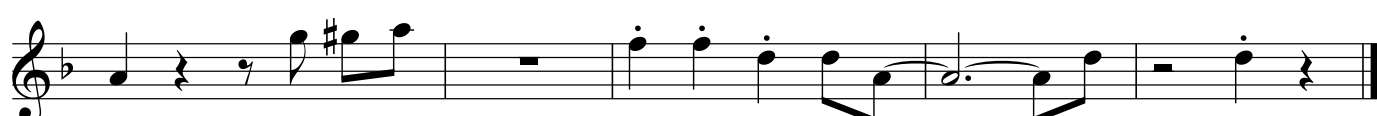
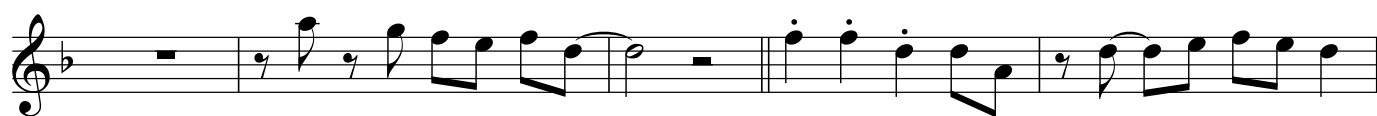
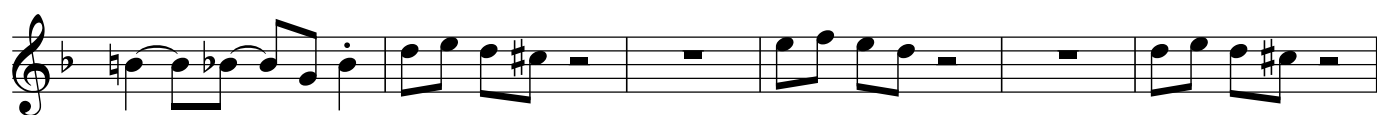
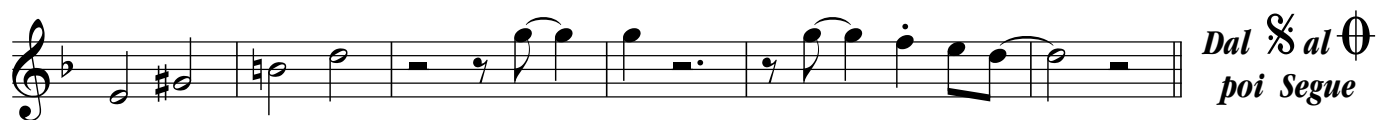
Fox-trot

Musica di  
**ANTONELLI - MORETTI**

**SAX TENORE**

Fox-trot 





# GINGER FOX

Fox-trot

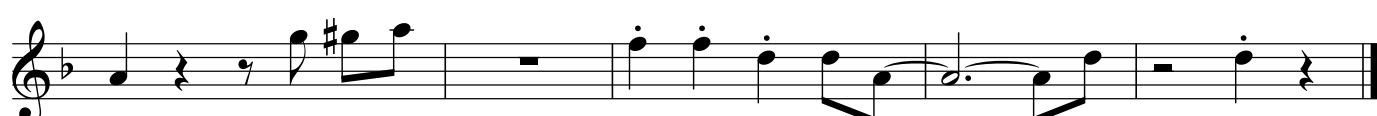
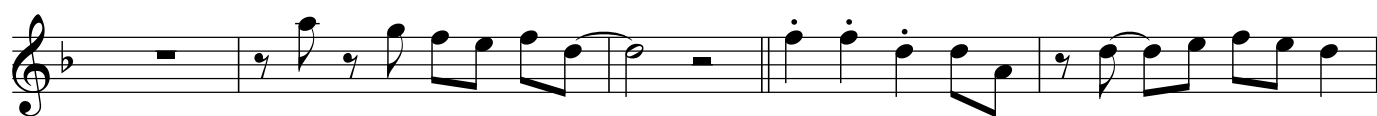
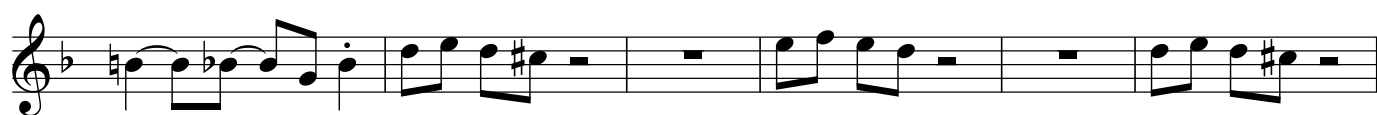
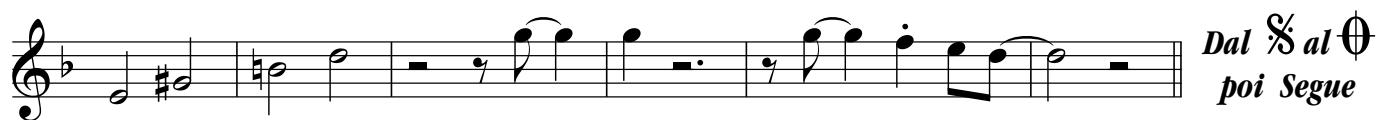
Musica di  
**ANTONELLI - MORETTI**

**TROMBA in Sib**

Fox-trot 



The musical score for Tromba in Sib consists of ten staves. The first staff begins with a treble clef, a key signature of one flat (Bb), and a common time signature (C). It features a triplet of eighth notes, followed by a series of eighth and sixteenth notes. The second staff continues the melody with a triplet of eighth notes and a series of eighth notes. The third staff includes a double bar line and a series of eighth notes. The fourth staff features a series of eighth notes and a double bar line. The fifth staff begins with a repeat sign and a series of eighth notes. The sixth staff continues the melody with a series of eighth notes. The seventh staff features a series of eighth notes and a double bar line. The eighth staff includes a series of eighth notes and a double bar line. The ninth staff features a series of eighth notes and a double bar line. The tenth staff concludes the piece with a series of eighth notes and a double bar line.



# GINGER FOX

Fox-trot

Musica di  
**ANTONELLI - MORETTI**

Fox-trot 

**SAX Contralto in MIb**



The musical score for Saxophone Contralto in B-flat consists of ten staves. The first staff begins with a treble clef and a common time signature. It features a triplet of eighth notes, followed by a series of eighth and quarter notes, and ends with a double bar line. The second staff continues the melody with a half note, a quarter note, and a half note, followed by a series of eighth notes. The third staff includes a half note, a quarter note, and a half note, followed by a series of eighth notes. The fourth staff features a half note, a quarter note, and a half note, followed by a series of eighth notes. The fifth staff begins with a treble clef and a common time signature, followed by a series of eighth notes. The sixth staff continues the melody with a half note, a quarter note, and a half note, followed by a series of eighth notes. The seventh staff includes a half note, a quarter note, and a half note, followed by a series of eighth notes. The eighth staff features a half note, a quarter note, and a half note, followed by a series of eighth notes. The ninth staff begins with a treble clef and a common time signature, followed by a series of eighth notes. The tenth staff continues the melody with a half note, a quarter note, and a half note, followed by a series of eighth notes.

