


## BALLO DI GRUPPO

Testo e Musica di:

## Disco Dance



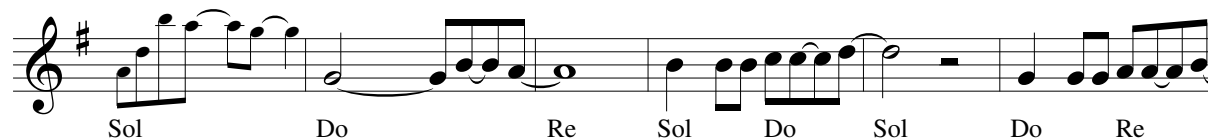
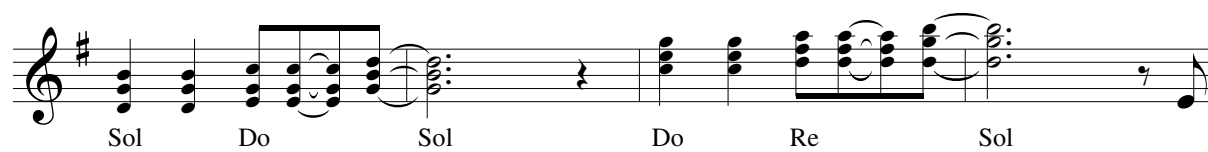
10   
Sol Do Re Fa Re Sol Re

Musical notation for the first staff of the exercise. The staff is in treble clef with a key signature of one sharp (F#). The notes are: Sol (G4), Do (A4), Sol (G4), Do (A4), Re (B4), Sol (G4), and Do (A4). The notes are connected by a series of slurs and beams, indicating a continuous melodic line.

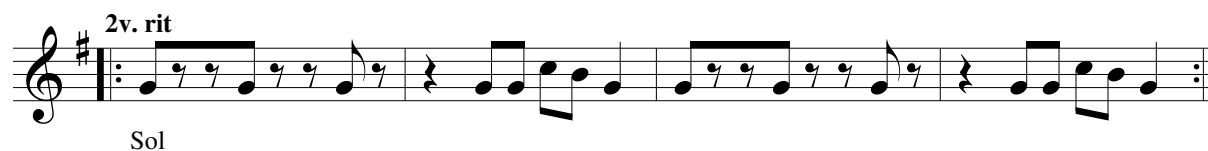
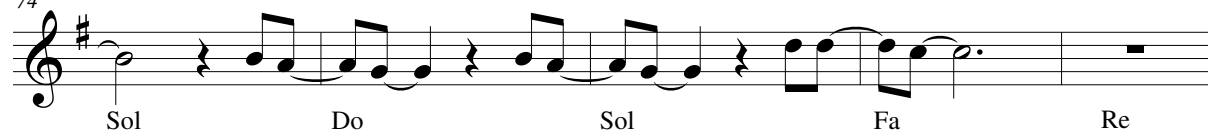
The first staff of music is written on a five-line staff with a treble clef and a key signature of one sharp (F#). The melody consists of the following notes: Sol (G4), Do (A4), Re (B4), Sol (G4), Do (A4), and Sol (G4). The notes are connected by a series of eighth and sixteenth notes, with some rests. The lyrics 'Sol Do Re Sol Do Sol' are written below the staff, aligned with the corresponding notes.

2

## LE MANI



74



83

